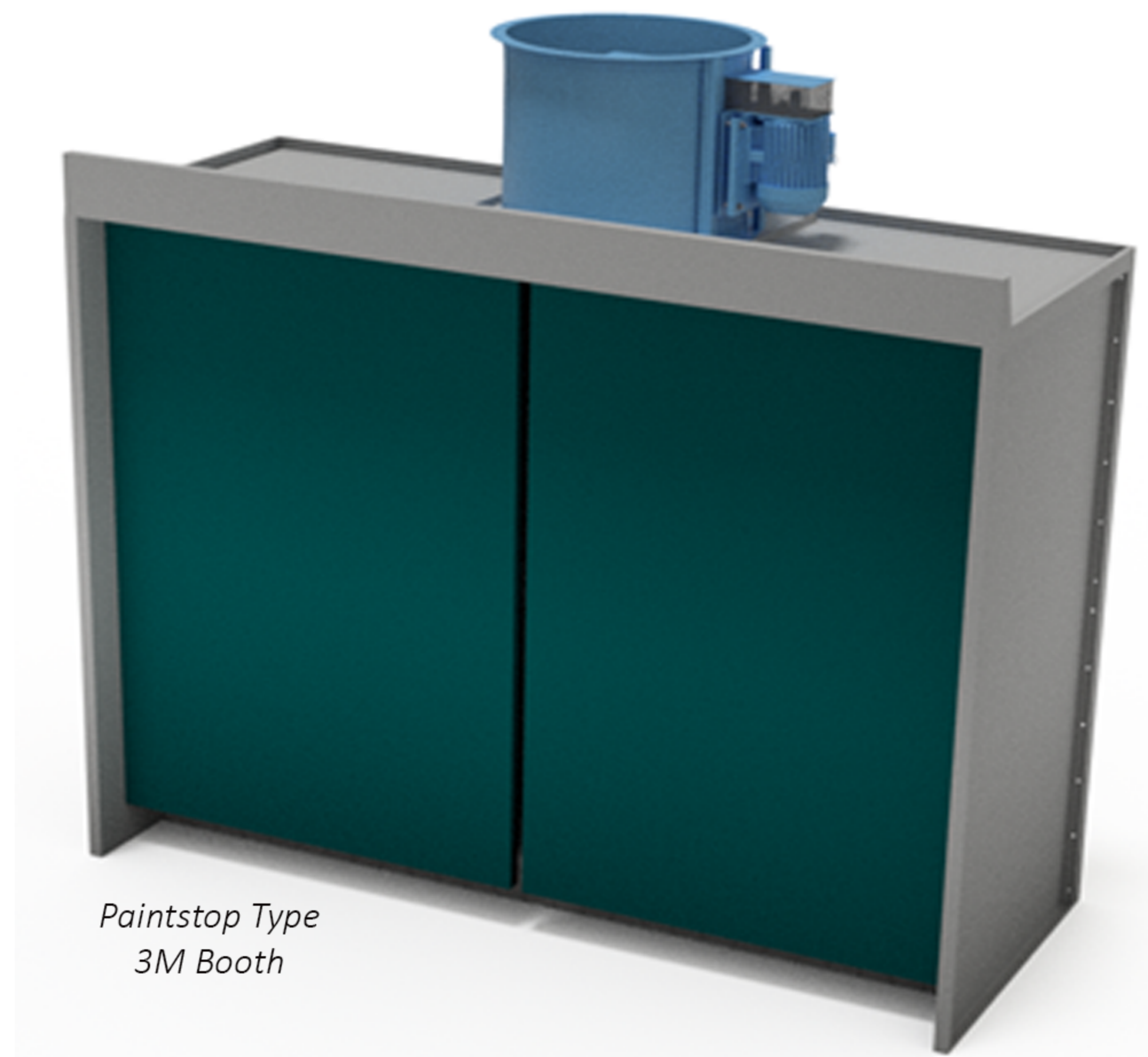
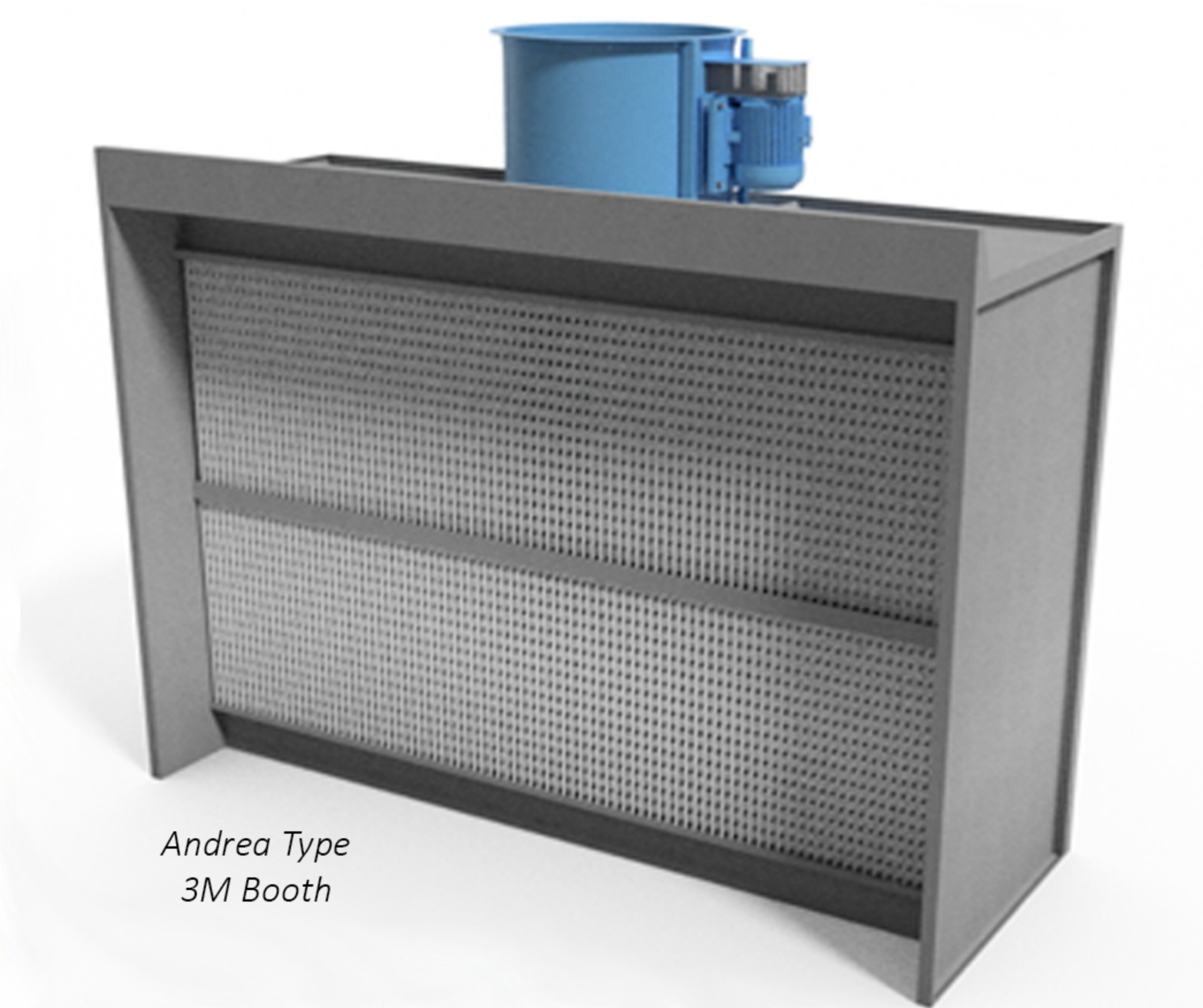


Dry Back SprayBooths



Here at Inventair Ltd we manufacture a range of spraybooths from 2M up to 6M. The booths are of a bolted flanged panel type modular construction manufactured from galvanised sheet steel.

The fans can be mounted on top of the spraybooth or outside on the wall with a purpose made fan bracket to suit site conditions.

The filter media options are 100mm thick pre-wetted fibreglass mat mounted on a mesh support grid for easy cleaning, or we can provide andria pleated media if required.

The discharge ductwork will be made from galvanised sheet steel, purpose made roof/wall flashings and terminate with a plasticowl.

FEATURES:

Fully modular construction, vast range of sizes and types.

Top or rear mounted fans.

Belt driven axial fans with external motors.

Choice of easy to fit low cost filters.

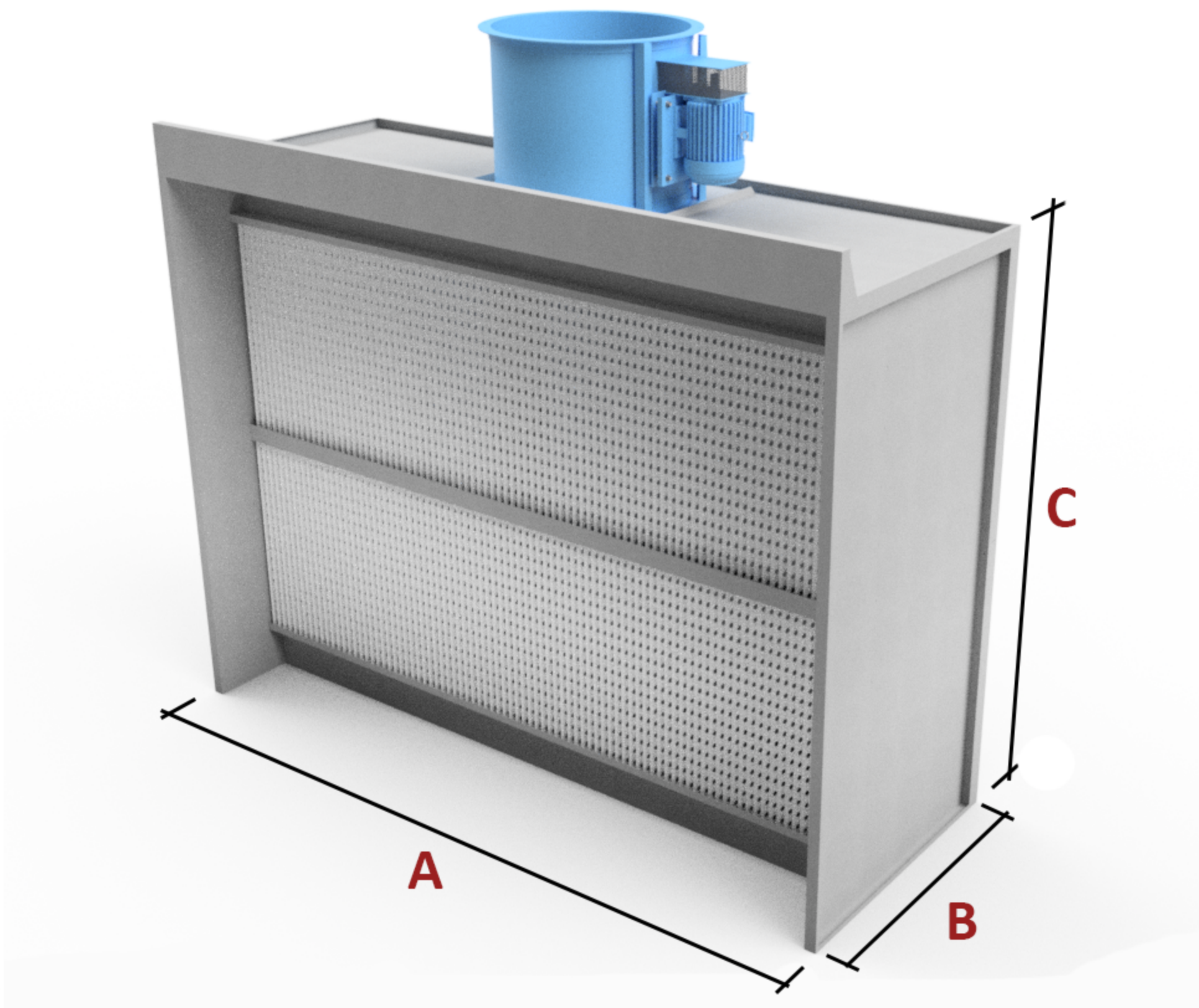
Simple, low cost maintenance.

Available in simple to assemble kit form of galvanised steel panelwork.

A detailed instruction manual can be downloaded via our website at www.inventair.co.uk

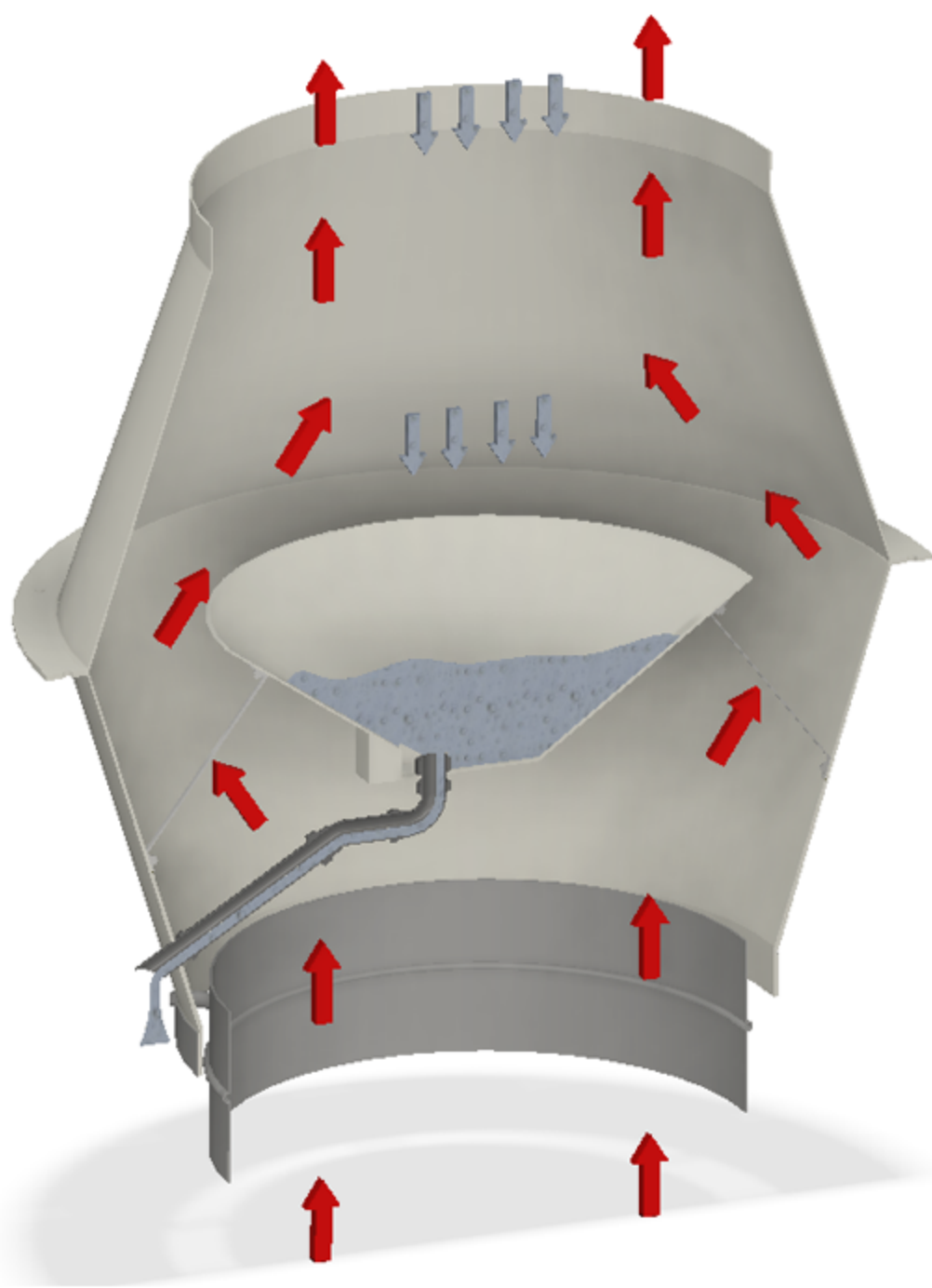


Dry Back SprayBooths Details...



Booth Size (Nominal)	A	B	C	No of Fans	Fan Dia	Fan Motor Size	Volume M ³ /Hour
2000 mm	2000	1100	2200	1	630	1.5 kw	13,500
2500 mm	2500	1100	2200	1	630	2.2kw	19,920
3000 mm	3000	1100	2200	1	710	3kw	18,600
3750 mm	3750	1100	2200	1	710	4kw	20,800
4500 mm	4500	1100	2200	2	630	3 / 2.2 kw	27,000
5000 mm	5000	1100	2200	2	630	3 / 2.2 kw	27,000

All volumes are based @18mm W.G



Plasticowl

This innovative and simple design meets the EPA requirements at a low cost. The unit is easy to fit, being lightweight and needing minimum support. Engineered composite construction means no maintenance and no corrosion.

Cowl's aerodynamic design will not affect extract system performance and in many cases improves flow and lowers power consumption cost. Another advantage is minimal external wind resistance and lower noise levels. Cowl comes as standard in an off white colour.

